

# Product Specification

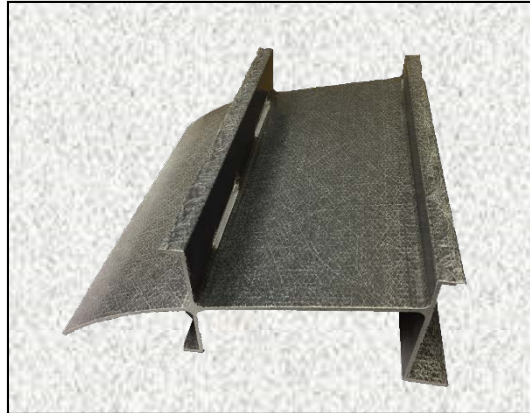
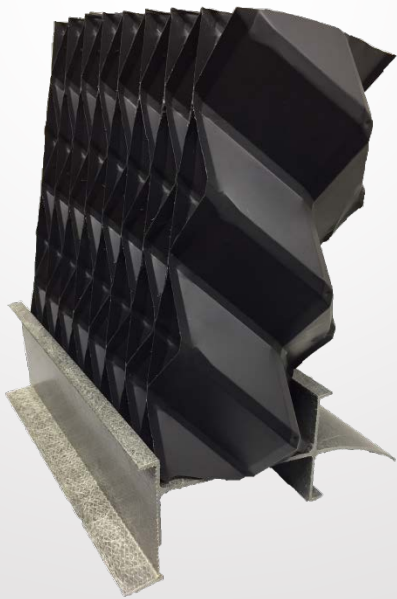
## Crossflow SDRU Support



### Product Description

The Crossflow SDRU Support is a constructed from FRP materials for long life and structural rigidity. The profile includes drainage slots and drain boards to insure water collected in the drift reduction unit panels can be easily diverted back into the wetted section of the tower. The support also functions as an air seal for panels installed in framing elevations below a support.

The Supports are available in 8' and 12' lengths and are suitable for installation in virtually any crossflow tower. The Supports **do not** require additional stiffening for 6' spans.



**XF SDRU Support**

Applicable Commercial Standards		
Flexural Properties (ASTM D790, 16:1 span /depth ratio)		
	Lengthwise	
	Stress, PSI	67,570
	Modulus, 10 <sup>6</sup> PSI	1.93
	Crosswise	
	Stress, PSI	17,984
	Modulus, 10 <sup>6</sup> PSI	1.07
Notched IZOD Impact (ASTM D256, Method A)		
	Lengthwise	ft-lbs/in 35.4
	Crosswise	ft-lbs/in 11.2
Water Absorption (ASTM D570)	24 hour soak. Wt %	0.36
Density (ASTM D792)	Lbs/cu in	.067
Coefficient of thermal expansion (ASTM D696) - Lengthwise	10 <sup>-6</sup> in/in/°C	7.0
Flammability (ASTM 635)		Non Burning
For dimensions and/or physical properties different from those listed above or special requirements including weatherability, flammability, etc., contact CES for agreement on the specifications.		
Statements and methods presented are based upon the best available information and practices known to CES. Because conditions of use may vary and are beyond our control, CES makes no warranty, expressed or implied, concerning the use of products. The user should undertake sufficient tests to determine the suitability for any intended use of the material. CES assumes no responsibilities for the use of information presented herein and hereby disclaims all liability in regard to such use. No statements are intended or should be construed as a recommendation to infringe any patent.		

**CE Shepherd Company L.P.**

2221 Canada Dry Street | Houston, TX 77023  
713.924.4300 (Main) | 713.928.2559 (Fax)  
Email: [coolingtowers@ceshepherd.com](mailto:coolingtowers@ceshepherd.com)

